

POWA Community NEWS



PROGRESS OF THE WAIKOUAITI AREA

www.waikouaiti.co.nz

March 2025



The Silver Selkies take their boards into the sea most days. We challenge the local blokes to get together and do the same.

Left to right: Catherine, Ruth, Rachel, Pat, Gaye, Kath, Megan.

Make up a team and join us

Friends, neighbours, workmates, clubs and sport groups this invitation is extended to all.

POWA combined with the Waikouaiti Volunteer Fire Brigade Tower Team are once again holding a Quiz Night.

This is always a popular event compered by a professional quiz master with lots of raffles boasting awesome prizes. There will be a cash bar and supper provided.

Register your team now : community.powa@gmail.com and get ready to have a fun-filled night.

Thursday 20th March at the Events Centre, 7pm start

We are winners!

POWA came 3rd equal in the Community Mural section of the Resene Masterpiece Mural competition.

This is a New Zealand-wide competition, and we are thrilled to see our community's creativity and hard work recognised at a national level. A huge thank you to everyone involved in bringing this mural to life.

Congratulations also to Karitane School for receiving 1st place in the Primary School section.



POWA AND THE WAIKOUAITI VOLUNTEER FIRE BRIGADE SKY TOWER TEAM PRESENT

QUIZ NIGHT

TEAMS UP TO 6 PEOPLE, \$5.00PP

THURSDAY, 20TH MARCH 2025
EAST OTAGO EVENTS CENTRE
DOOR OPEN AT 6.30PM, 7PM START

Professional Quiz Master
Cash Bar
\$1-\$2 Raffles - lots of awesome prizes
Supper provided
Register now and book a table for this fun-filled night!

REGISTER YOUR TEAM TODAY!
community.powa@gmail.com



POWA Updates

★ **Saturday 1 March**

10am-3pm
Hauora Day: Free Health Check
Puketaraki Marae, 520 Apes Road

★ **Sunday 2 March**

9.30-1.30
Waikouaiti Artisan Markets
East Otago Events Centre

★ **Sunday 2 March**

2pm
Memorial Service for Judy Watson
Presbyterian Church Hall, Kildare Street

★ **Tuesday 6 March**

10am-11.30am
Plunket First Aid Course
Plunket Rooms, EOEC

★ **Saturday 15 March**

10am
One Coast Fabric and Craft Sale
East Otago Events Centre

★ **Saturday 15 March**

8.30am
IRB South Island Surf Rescue Championships
Waikouaiti Beach

★ **Thursday 20 March**

6.30pm – 7.00pm start
Quiz Night
East Otago Events Centre

★ **Thursday 20 March**

POWA Community News
Deadline for contributions

★ **Saturday 22 March**

10am – 11am
Waikouaiti Crop Swap
Presbyterian Church Hall, Kildare St

★ **Sunday 23 March**

10am-2pm
Palmerston Garage Sale Extravaganza
Map from Puketapu Radio Station

★ **Monday 24 March**

Otago Anniversary Day

★ **28 March**

No Place Like Home post card exhibition
Entries Deadline
Community Art Hub, Palmerston

East Otago Social Bridge Club Inc

We warmly invite new members to register their interest in lessons. Keep your brain active and make some new friends while having fun. Classes begin on Monday 31 March 20 and are held in Palmerston. Subscription is \$50 for the year (includes a cuppa).

Susan M : 022 0214 722 E : EOBridge@outlook.com



Palmerston Lions Club

Are you recently retired or a young person, new to the area with an interest in the community? Palmerston Lions Club, which supports local and charitable organisations needs you. Potential members are welcome to attend any of the club's regular meetings on the 2nd Monday of the month (excludes December and January). We know that some people are willing to help with projects but are not ready, or able to become full members. No problem. We welcome your involvement in any way that suits you.

Ronald Sheat M : 027 431 545 Bruce Lee M : 027 212 7075



Neighbours Aotearoa is a community development initiative, dedicated to growing connections between neighbours. It encourages us to get to know our neighbours through everyday activities such as cooking, eating, making, learning and repairing. The focus is on how we can create opportunities that will appeal to the many different people who live in our neighbourhoods, to bring us together. This innovative project is designed to help us to build supportive and resilient communities. Neighbours Aotearoa takes place from 1-31 March so head to their informative website for more details and to be inspired.
www.neighboursaotearoa.nz



POWA Business Directory

Over the next few months, we will be putting together our POWA Business Directory, which enables local businesses and organisations to reach out to the community with a free listing. We welcome new and established businesses, groups and organisations, no matter how large or small, to contact us. Are you a handyman or handywoman, willing to take on small jobs? Get in touch. See page 14 for more details.



2025 BP South Island IRB Championships.

Inflatable Rescue Boats (IRB's) were introduced into surf life saving during the 1970s as a means of responding to rescue situations more efficiently. A skilled crew can negotiate the breakers swiftly and rescue several people at once, giving struggling swimmers a much greater chance of survival. So, get down to the Waikouaiti Beach on Saturday 15 March, and observe our best life savers as they take part in the South Island Championships.



POWA Community News: delivery people wanted

One of our regulars is leaving Waikouaiti, so we need a replacement to join our friendly team of volunteer delivery people. The POWA Community News is delivered on the first weekend of each month. We will work out your route with you and take it from there. Contact us for more information.

Catherine Robinson M 0210 356 086

E : powa.editor@gmail.com



East Otago High School parkrun

Held Every Saturday morning at the East Otago High School Sports Field, 8am start. In extreme weather events check our website or face book page for cancellation

Chris Wells M:027 481 1755

E: eastotagohighschool@parkrun.com

If you wish to advertise or contribute to the POWA Community News email your copy to:
powa.editor@gmail.com
or drop it into the POWA office, Events Centre, Waikouaiti by the 20th of the month

POWA Office, Events Centre,
203 Main Road, Waikouaiti
Hours : 10am - 3pm
Tuesday and Thursday
PO Box 21, Waikouaiti 9510
E : community.powa@gmail.com



facebook.com/POWA

Local residents were sickened and distressed to discover a boned-out red deer in Post Office Creek during February. Two large chunks were washed downstream. People who saw this were outraged and this prompted one of our readers to reflect on his experience as a hunter and to share his thoughts.

Whoever did this, is not a true hunter

A true hunter, who hunts in the outdoors for meat to supplement the family's diet, abides by some common rules of hunting for the table. He/she stalks the animal carefully, quietly, into the wind and close enough to dispense the target quickly and humanely.

Once the animal is grounded, it is carried to high ground for butchering, a process that includes skinning, gut removal and finally the boning out, of all particular joint cuts. Once cooled the joints are packed and carried out.

The remaining parts, which may be bone, skin and inedible offal's are concealed where possible away from water courses or water course avenue's allowing for natural decomposition. Sometimes carrion birds such as harrier hawk or black back seagulls will assist in the decomposition process by consuming the remains.

A true hunter is taught to respect the environment and the deceased carcass which provides a food source to share with family and extended family. True hunters learn these



tricks and skills from their elders or from hunting and fishing clubs which are prevalent in this country.

The person who dumped these animal remains into the creek is not a true hunter, but an idiot who has no respect for the environment or the animal. This person lacks skills in butchering and proper disposal techniques as they have dumped a fully-fleshed hind quarter amongst other remnants into Post Office Creek for all to see. Someone knows the person responsible for this despicable environmental action.

Richard Yardley: A true hunter

Footnote: Ruth Ferguson from the Hawksbury Lagoon Committee reports that when the remains were discovered, she reported the carcass to the ORC as recommended by Fish and Game Rangers who were equally disgusted. She phoned the ORC, took photographs of the bits and location. Someone at the ORC phoned back to say that staff were on their way.

Judy Watson

In the February issue of the POWA Community News, we featured Local Legend Judy Watson. We received positive comments from readers who knew Judy or had worked with her on various projects during the time she lived in Waikouaiti and Palmerston.

Sadly, Judy passed away on 11 February. Her daughter Kate shares some thoughts.

Mum died very peacefully after a short illness. She was such a positive, person. The last time she was conscious I said, " Oh YAY, there's your pretty face" and she laughed. Up until recently, she was reading and doing puzzles with Dad. She was still knitting, weaving and mending

I want to share some history. Mum (Judy) along with Betty, Thelma and June were in Waikouaiti when the Cherry Farm Hospital in Hawksbury closed in 1992. This had a drastic effect on the community as many residents worked there.

The ladies (and men) got together to support each other as they set up home businesses. They formed clothing sales and set up food banks. These were mostly run out of the big old wooden Town Hall and combined churches.

And, that's where POWA started – Progress of the Waikouaiti Area. Mum, dad and their friends and neighbours wanted the community to progress and not stagnate as

so many communities did during the big restructuring decades of the 80s and 90s. Not just the hospital at Cherry Farm, but banks, post offices, courts, mills etc were dismantled during this era.

I used to visit Waikouaiti and hear about the ideas they had. Dad edited what was then the POWA Newsletter. Local craft, environment, art, garden, etc groups were well supported. People were creative, sharing and remained engaged with local government. Living in this district, Mum was happy and fulfilled and had many friends.

Kate Watson

There will be a memorial service for Judy on Sunday, 2 March at 2pm at the Presbyterian Church Hall, Kildare Street. All welcome.. In lieu of flowers, the family would appreciate a bulb or small plant, for a memory garden for Judy.



WAIKOUAITI LIBRARY

192 Main Road, Waikouaiti ph 465 9110

Pride Month

Rainbow paper craft throughout March (free)

East Otago Poets

Tuesday 25 March 9.30am – 11.30am

Seed Library

If you have left over seed from your summer planting drop it in to us for our Seed Library (clean, labelled seed only please)

DCC Service Centre

Monday – Friday: 11am – 5pm

Get your Bee Cards and top-ups, pay your rates, register your dog, pay parking fines, get your 75+ parking permit,

You can do it all at Waikouaiti Library – where parking is free!

Digital Library

<https://www.dunedinlibraries.govt.nz/digital-library>
Read e-books, listen to e-audio, read e-mags (BorrowBox), read world newspapers (Press Reader), watch free movies (Beamafilm), enjoy a graphic novel (Comics Plus), do an online jigsaw (Jigsaw Explorer), get a craft lesson or idea (Creative Bug)

Eryn Makinson

Ph : 03 474 3690 E : Eryn.Makinson@dcc.govt.nz

Library Hours

Monday – Friday: 11am – 5pm

Saturday: 10am – 1pm



Waikouaiti Transfer Station

140 Edinburgh Street, Waikouaiti

Hours : Wednesday 12 noon - 5pm

Saturdays and Sundays 10am - 5pm

If you don't receive the POWA Community News in your Mail box, we can deliver it to your In-box each month. Get in touch: powa.editor@gmail.com and never miss a copy.



M. JOHNSTON

CONTRACTING 2018 Ltd

Matt Johnston

☎ 027 4755 530 ✉ mjcontracting22@gmail.com

**Excavator
Firewood**

**Gravel Supplies
Root Raking**

poetry corner

This month, Poetry Corner is a little bit different. We honour Brian Turner (4 March 1944-5 February 2025). Brian was a New Zealand poet, author, environmental campaigner, mountaineer and field hockey player. He was the New Zealand Poet Laureate between 2003 and 2005. Brian lived in Otarehua, a small town in the Ida Valley and his brothers were Glen (cricketer) and Greg (golfer). If you're not a poetry lover, or you find some of it obscure, Brian's poems, especially about the central Otago landscape and ordinary people might make you change your mind.

Keep It Up

A farmer asked me
if I was working
and added
he didn't mean
writing
I said
I was sawing
and stacking wood,
tidying the shed,
pruning the hedge.
'Is that work?'
'Yes,' he said
'keep it up.'

Are you a budding poet? Send us your poem and a brief bio.

E : powa.editor@gmail.com

bd BARRY DELL

• Plumbing • Roofing • Drainlaying • Gasfitting

Commercial and Domestic Repairs + Maintenance

www.barrydellplumbing.co.nz enquires@barrydell.co.nz

104 South Road 'The Glen' South Dunedin

PHONE 455 4100



Dee Vickers
Handcrafted Designer Bags

Small Change

81 Beach Street
Waikouaiti 9510
Tel: 022 129 1152
dee.vickers@xtra.co.nz

Bags With Attitude!

Garden Gems

Members of the Waikouaiti Garden Club tell us what's special about their gardens

Gardening from a wheelchair

Faye Norris

I have lived in Waikouaiti for 76 years, 54 of them in this house which was a hospital house. This means that it was provided by the hospital for staff. I worked at Cherry Farm Hospital as a typist in the Administrative Block and in the villas.

When we moved in, the house was only four years old and had not been landscaped at all. The soil still had a lot of rubble from the house-build, so the garden was a blank canvas except for one agapanthus sitting on top of a concrete sewer, a little tree at the back door and hedges around two boundaries.

I've always loved my garden but since I became disabled and need a wheelchair, I've had to adapt and learn new skills. I'm strong and stubborn and try to keep life as normal as possible. I've found new ways of doing things while in a wheelchair, but everything takes more time than it used to and often takes more than one go. I know how much I can do but sometimes it's very frustrating. Recently I planted some hedge plants (Buxus) and my daughter and friends are puzzled by how I did it from the chair (probably a sign of my stubbornness)

I don't have a favourite plant (I describe myself as a plantaholic). I buy plants and then work out where I am going to put them and always find a place. I like the plants/bulbs my Mum used to have in her garden e.g. matchheads, anemones, ranunculus and Iceland poppies. I also like roses, alstroemerias (for their vase life especially), penstemons, hydrangeas. I like rhododendrons, camellias, viburnums, and so on.

I love being in the garden and hearing the birdsong including the sound of the hens next door when I work at that end of the garden. I grew up with hens, so I love the memory of that. Over the years, I was always the one to decide what I do in the garden while my husband did the

constructing. He was fussy about the lawn and edges, and it looked very nice when that was all done, so I have the memories of bricks being put down, archways going up, and various other projects.

The garden has certainly changed over the years, and I'm pleased that the bones of it are well established. I think that most gardeners know how much time is needed to keep on top of the work in a garden and mine has certainly got away on me. I feel quite overwhelmed when I look around parts of it and think about what it used to look like. Unfortunately, my mind is more active than my body!! But I'm pleased that I'm still as enthusiastic about it because it's a therapeutic activity and I can't imagine anything more so.

I have a liking for small power tools. I own a hedge trimmer and a small chainsaw, much to my daughter's horror. She worries that I will cut off my other leg. I enjoy pruning. I keep veges in pots and I can pull the hose to water the pots but there's a knack to that from a wheelchair!

I do have some help around the house with Healthcare support ladies coming twice a day and a District Nurse twice a week. But sometimes

it's hard to keep up with weeds in the garden, especially in the growing season. Recently Trish, the postie, put a message on Facebook asking for people to have a working bee in my garden. I was surprised and grateful when (I think) 6 gardeners turned up and worked for a couple of hours. What a difference!

I love my home and garden and intend to stay independent as long as possible. Stubborn, eh?

Faye has been a member of the Waikouaiti Garden Club since 1999 and was a committee member and treasurer for many years. If you're interested in joining the Waikouaiti Garden Club, see page 15 for details.



SECURE STORAGE

Seeking expressions of interest for:

- Boat, car, caravan storage, indoor & outdoor available. Secure lighting and CCTV gated compound
- indoor room lockers
- mechanic workshop with pit
- potential high-roof workshop for boat maintenance with bathroom facilities

Phone Dean 0274 773583

FREE Whānau HAUORA Day
PUKETERAKI MARAE
520 APES ROAD, (OFF COAST ROAD) KARITANE, OTAGO
SATURDAY, 1 MARCH
10AM - 3PM
KIDS GAMES & ACTIVITIES
FREE HEALTH CHECKS
SPOT PRIZES
FACE PAINTING
YUMMY KAI
FREE PARKING
Cancer Society
WellSouth Primary Health Services
Health New Zealand
FIND OUT MORE & REGISTER HERE
www.wellsouth.co.nz/whanau-hauora-day



We're your local dog adventurer & trainer team!

Get in touch

☎ 021 072 9158
 🌐 www.needsawalk.co.nz
 📍 East Otago

Our Services

- ✓ Solo/Pack Adventures
- ✓ Dog Boarding
- ✓ Pet Drop in Visits
- ✓ Dog Training




New patients welcome

Our team of qualified experienced dental surgeons & hygienist are committed to making your visit comfortable. Providing the highest quality dental care for your family.

- Evening & Saturday appointments
- ACC registered provider treatment
- Free dental care for under 18 years

Call today for your appointment

Waihemo Service Centre (Library Building)
 54 Tiverton Street, Palmerston 9430
 Tel 03 465 1591 After hours 027 4812 491

ONE AGENCY
THE PROPERTY SPECIALISTS



RHYS VIDGEN
YOUR LOCAL COASTAL REAL-ESTATE SPECIALIST

📞 027 600 5450
 ✉ vidgens@oatps.nz

Licensed REAA 2008



APM Carpet Cleaning

Andrea & Phil McDonald

Phone now for a free quote 0228537008

- carpet and rug cleaning.
- Injection/extraction deep cleaning.
- Coffee, cordial, food and puppy piddle stains.
- flood damage treatment.



Community based non-profit early childcare centre

Welcomes children and their families/whanau from zero to six years for education and care.

- Our opening hours are 8am to 4pm Monday to Friday
- We provide government funded 20 hours for three and four year olds, WINZ subsidies are also available.
- You and your family/whanau are very welcome to visit our centre to meet staff and have a look around.

5 McGregor Street, Waikouaiti
 Ph 03 4657 319 - bigsteps@xtra.co.nz

PEWS NEWS

St John's Anglican Church

Sunday March 9 at 10 am, an ecumenical service with Rev Joy Hamilton-Jones.

Morning tea to follow.

Everyone Welcome.

Any queries regarding St John's please contact Bev Medlin 027 307 9100

Presbyterian Parish of Waikouaiti - Karitane

March 2 - 10am Shared Communion Service at Karitane Church, led by Rev Hilary Oxford-Smith

March 7 - World Day of Prayer, morning tea at 10.30am followed by service

March 9 - Shared Service at St John's Anglican Church

March 16 - 10am Service at Karitane Church led by the Robertson Family

March 23 - 10am Service at Waikouaiti Church, Kildare Street

March 30 - 10am Eucumenical Service at Waikouaiti Church, Kildare Street

Hawksbury Christian Fellowship

Services at 10am every Sunday at Hawksbury Village Chapel.

Also weekly bible study groups, ladies' group, and monthly men's breakfast. All welcome.

For more information contact:

Rodger and Ruth Mangai 021 126 5775

or Peter and Thelma Arnott 027 235 8397

St Anne's Catholic Church

Waikouaiti Mass every Sunday at 12 noon; Hampden Mass at 1.30pm on 1st and 2nd Sunday each month.

Community Emergency Hub

Your go-to in an emergency:

Waikouaiti - East Otago Events Centre

Karitane - Puketeraki Marae

FAU MCLEAN PAINTING & DECORATING

TRADE QUALIFIED PAINTER

PHONE: 021 0835 4680

EMAIL: FAUMCLEANPAINT@GMAIL.COM



Lagoon Creature of the Month: Hylaeus relegates, a masked bee



20 January 2025: Bees seen on koromiko bush at Inverary Street entrance to lagoon

Kia ora koutou. What a GREAT start to 2025 we have had!

We were delighted to welcome five new families to our school whānau at our start of year pōwhiri at Huirapa Marae. We hope you have a great time learning with us at Karitāne School.

This year our overarching learning theme is He Takata - people. We started tuning in to this by going on a bit of a planned hikoi (walk) round the village. We went to Parata Ave, the Truby King house, the Cherry Farm wharf and the Waikouaiti Native School house - all the while thinking, asking questions, listening to information and exploring links. We went to the cemetery and looked at the final resting place of Orpheus Beaumont (look her up), met some of our lovely locals (shout out to Brad and Dirk) and looked at the Huriawa peninsula while we were reminded of the great siege of Huriawa pa. What a fascinating and historic place we live in!

Teaching and learning programmes are off to a flying start. Start of year numeracy and literacy assessments are complete and now the fun begins! We are continuing with our whole school approach to structured literacy and are now looking at what elements of the science of learning and in particular, explicit instruction can be applied to our maths curriculum as we start to focus in on the refreshed New Zealand Mathematics curriculum.

Our school swimming programme has started again, and we are thrilled that nearly all of our senior students will be able to participate in the Three Peaks Cluster swimming sports held at the East Otago High School pool. We think this is testament to the fact that our students enjoy quality swimming instruction for three terms a year.

And in news just to hand . . . we have just found out that Karitāne School has won the Resene National Mural competition (category year 6 or lower) with our stunning mural depicting the separation of Papatūanuku and Rakinui. A big pat on the back to all our budding artists and a big thank you to our specialist art teacher Helen. This mural was the culmination of mahi completed with our teachers and the late Rua McCallum around the Kai Tahu creation narrative and is very special to us.

Nic Philip, Principal E: principal@karitaneschool.co.nz

At the Inverary Street entrance to the lagoon I was fascinated to find a koromiko bush (hebe) with many small dark insects visiting the flowers. iNaturalist respondents identified this as *Hylaeus relegates* one of our native solitary bees. These little insects don't look like bees so are not often identified as such and they don't sting. I found iNaturalist very useful to identify this insect.

H. relegates is only found in Aotearoa/NZ and occurs in all our islands. It is considered one of the more commonly found native bees, and although numbers seem low, they are not considered endangered. Females are slightly larger than males at 6.5-9.1 mm. There are regional variations, some with yellow head markings and others without; bodies are usually black, have few hairs and membranous wings.

As solitary bees, these wee insects do not live in hives, but females establish a single nest hole in wood, dead branches and flax stalks. They line the hole and stock it with pollen grains to feed their larvae. The adult bees feed on both native and introduced species. As they carry pollen in a crop they are not considered to be as useful as pollinators compared to other bee species. Although these bees were first identified in 1876, little is known about them but there is increasing interest in their study. Providing bug hotels can help in increasing numbers as lack of suitable nesting sites is considered to be limiting their numbers.

See: <https://www.fortheloveofbees.co.nz/ngaro-huruhuru>
<https://www.inaturalist.org/taxa/447402-Hylaeus-relegates>

Ruth Ferguson

E: risabelfe@gmail.com



**Jeffrey
Dennison
BUILDERS**

Specialising in new homes, alterations, renovations and general building work. Quality building at its best.

Visit our website: www.jdbuilders.nz
Contact 027 354 1754 jeff@jdbuilders.nz

REIKI ENERGY HEALING
now available in East Otago!
For more information email Raven:
ravenrainbowreiki@gmail.com
To book an appointment phone:
027 486 8374
One hour Reiki treatment \$80



EAST OTAGO MUSICAL
THEATRE PRESENTS

MAMMA MIA!

MUSIC AND LYRICS BY
BENNY ANDERSSON
BJÖRN ULVAEUS
AND SOME SONGS WITH STIG ANDERSON

BOOK BY CATHERINE JOHNSON
ORIGINALLY CONCEIVED BY JUDY CRAYMER

Licensed exclusively by Music Theatre International (Australasia).

10 - 14 June 2025

East Otago Events Centre, Waikouaiti

Tickets on sale 25th March 2025

www.eastotagomusicaltheatre.com

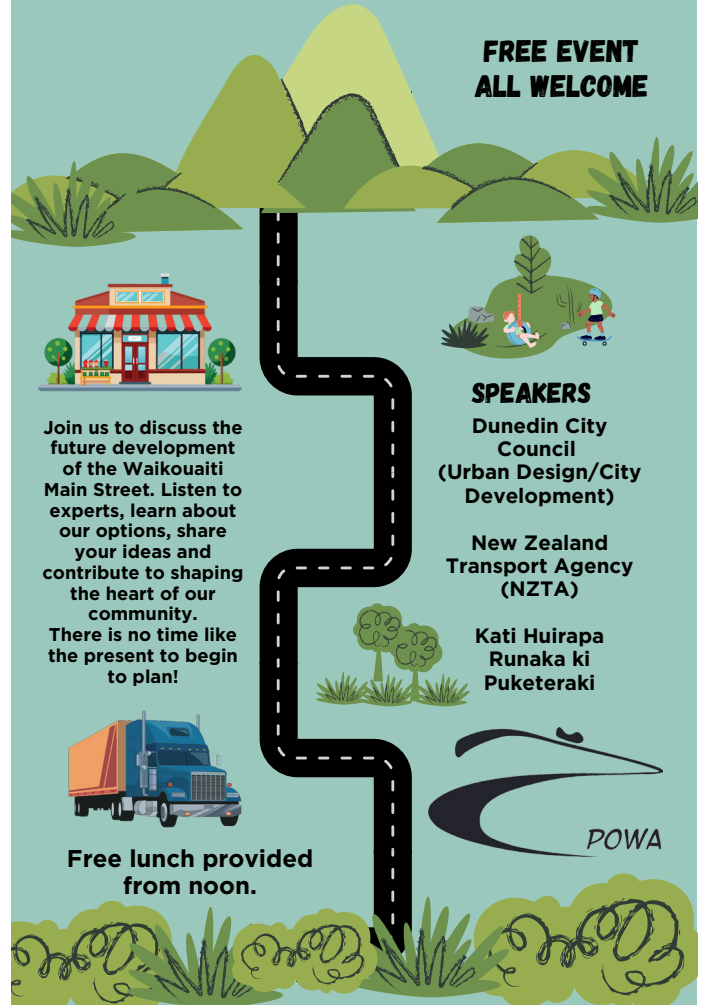
COMMUNITY HUI

MAY 2025 (DATE TO BE CONFIRMED)

12PM - 2PM

EAST OTAGO EVENTS CENTRE, WAIKOUAITI

FREE EVENT
ALL WELCOME



Join us to discuss the future development of the Waikouaiti Main Street. Listen to experts, learn about our options, share your ideas and contribute to shaping the heart of our community. There is no time like the present to begin to plan!

SPEAKERS
Dunedin City Council
(Urban Design/City Development)

New Zealand Transport Agency (NZTA)

Kati Huirapa Runaka ki Puketeraki

Free lunch provided from noon.

POWA

BLUESKIN Painters

residential painters & decorators

Brett 022 1970 269

Dunedin . Blueskin Bay . Karitane . Waikouaiti . Palmerston

working with
NATURE
Sustainable gardening services

Simone
022 312 5366
simoneemery01@gmail.com

Experienced
Qualified
Honest & hardworking

bp
IRB
SOUTH ISLAND
SURF RESCUE CHAMPIONSHIPS

2025 BP SOUTH ISLAND
IRB CHAMPIONSHIPS
Saturday 15th March
Waikouaiti Beach



Mosgiel Computers Has Gone Mobile

03 489 7699 • 021 0829 8781 • Sales@mosgielcomputers.co.nz • www.mosgielcomputers.co.nz

- ✓ Computer, tablet & phone security is essential in order to get banking ombudsman protection
- ✓ Need to have proof of taking reasonable precautions we recommend you get Kaspersky antivirus & installed by us
- ✓ We do data recovery, sell new pc's and do repairs on old

OPERATING HOURS
Monday - Friday 10am to 5.30pm
Saturday 12.30pm to 2.30pm
Sunday Closed

76 McGrath Rd, Waikouaiti 9471

Kaspersky is \$79
as of Nov 2024
Premium antivirus version

Microsoft have advised w10 is ending support mid 2025 & to run with 11 your pc needs to be no older than 4yrs to comply!



Support Local : The Golden Fleece Hotel

We often assume that the main purpose of ‘the pub’ is to sell alcohol and food. But, in small towns like ours, the pub acts as a community hub where people from diverse backgrounds come together to create an atmosphere of camaraderie. It’s a place where locals feel comfortable striking up a conversation with strangers or where they catch up with friends.

Inns, taverns and hospitality have played an important role in NZ culture and the Golden Fleece has played an important part in the life of Waikouaiti. The original Golden Fleece was built for Mr Charles Hopkinson and was trading by 1863. Our old friend Johnny Jones bought it in 1865 and put Mr Joseph Beal in as manager. The building that we know as the Golden Fleece Hotel opened on 17 December 1960 and throughout its long lifetime, has had a variety of owners. It’s time to meet the present owners and to catch up with some of the ongoing changes.

Ross was born and raised in Christchurch and is a qualified Executive Chef with 45 years’ experience in the hospitality industry. He is a member of the NZ Master Chef’s

Sustainability in Action

Ross: ‘We have invested in a Solar System to assist our power usage and lower our carbon footprint. We have installed 72x large 600-watt panels on the roof of the Golden Fleece, giving us 43.2kw of power at 3 phase. When our solar production exceeds our consumption, any excess power will be fed back into the grid and provide electricity for about 12 local houses. This is one of the largest systems installed in Otago and technicians from Auckland were required to commission this 3-phase facility.’

Association and a strong believer in teamwork. Ross and partner Cheryl, together with the team have the expertise and experience to take care of everything that goes on in the kitchen, restaurant and bars.

Why the Golden Fleece? ‘I was looking to buy a business and Golden Fleece was available’, he says, ‘I like the location on Main Street and I liked the size and the layout of the Golden Fleece.’ And Ross knows the area well as Cheryl’s parents live in Palmerston.

What are some of the changes? The kitchen has been upgraded, the Bar and Restaurant freshened up and an Espresso machine installed. The Bottle Store is fully stocked with a range of offerings and there’s SKY Sports. The Gaming Room and TAB terminal are located away from the family lounge bar and restaurant. ‘In this way, we’re actively promoting a friendly atmosphere to encourage families to come to the Golden Fleece,’ says Ross, ‘and we’ve got lots to offer.’ These include Pizza night on Thursdays (2 Pizza’s for the price of 1) and Curry night on Wednesdays. You can dine in the restaurant or bar or order these as a takeaway. ‘And,’ adds Ross, ‘SuperGold Card holders get 10% discount off all meals and drinks from our Restaurant.’ Check out the selection of frozen home cooked meals available at the Golden Fleece. You get two for \$30 with a further 10% off for SuperGold Card holders. ‘If you have dietary requirements, discuss these with us when you place your order,’ says Ross.

Continued over page

YOUR ONE STOP SPOT!

NO PUBLIC HOLIDAY SURCHARGE EVER!
NO PAYWAVE SURCHARGE EVER!
SUPERGOLD -10% of all Restaurant Meals & Drinks.

Restaurant - Buffets - Bottle Store - Takeaway Meals.
Bars - Gaming - Two Free EV Chargers - Pool and Darts.
TAB - Sky Sports. Espresso - Burgers - Pizza - Curry night.

Country Hotel Hospitality with: Great Food,
 Ales & Wines, Friendly Service & Nice Locals.
 New Summer Menu for 2025 is on Facebook!

Call in, Phone or Email us for your next Function!
Catering - Full Sound Subs & Lights - DJ Studio - 4 Mic Karaoke -
FM Radio on 88.3 - Dance Floor & More.

Now OPEN Wed to Sun from 11.30am to 8.00pm*



GOLDEN FLEECE HOTEL - WAIKOUAITI
STATE HIGHWAY #1 9510 OTAGO. 03 4657395
www.goldenfleecehotel.nz goldenfleecehotel@outlook.co.nz



We're locally and family owned and operated which means we'll always be here when you need us
Compassionate guidance, support and advice 24/7

GILLIONS
FUNERAL SERVICES

Ph: 03 455 2128 (24hrs)
Toll-free: 0800 858 555
407 Hillside Rd, Sth Dunedin
www.gillions.co.nz

Tracey's Cleaning Services
traceyelsie@hotmail.com

Tracey Tiddy
Owner/Operator
027 337 3229
Household Cleaning, Windows, Spring Clean



19 Rothsay Street, Waikouaiti
Also available for House Sitting



KEA TREWORKS
Certified Arborists

Pruning – Removals – Chipping
For all your tree maintenance needs contact Kea Treeworks today!

Jack Vaughan 021 582 300
keatreemail@gmail.com
keatreeworks.co.nz



WAIKOUAITI FOOD CENTRE

Your local food store has just what you need when it comes to shopping for your daily grocery essentials, locally sourced produce, beer/wine and NZ Postal services.

Enjoy your shopping with more savings, in-store promotions and everyday low-price deals.

Follow us on Facebook@Waikouaiti foodcentre

Waikouaiti Foodcentre
186 Main Road, Waikouaiti 9510
Email : Waikouaiti.fc@gmail.co • Ph 03 4657164




NGAHUA CROSSMAN

2A Clackmannan Street, Waikouaiti
022 185 2879 inspiringdesign.co.nz

INSPIRING Design

The Golden Fleece Hotel

continued from page 9

The old Takeaways area now houses the Smokehouse equipment. 'All meals on the menu can be ordered as a takeaway from any of our 4 terminals.' says Ross. Have you noticed that there's free EV charging outside? Drop in and enjoy a coffee while waiting for the car to charge up. What else is new?

Ross: 'In conjunction with Happy Days Radio from Palmerston, we've installed a full FM Radio Studio. Our studio is available for advertising, Guest DJ's and hosting of community events, including requests and sponsorships. We transmit to Waikouaiti and Palmerston on 88.3FM and everywhere via the Internet.'

Working with clients is important to the team so get in touch if you're planning events such as a wedding reception, party, wake or fund-raiser. 'We're fully equipped to cater for all events from 2 to 200 guests,' explains Ross, 'the bar and restaurant have separate sound and lighting systems.' So, if you want UV, Laser or Impulse Lights, Fog, Snow or Bubble machines at your event, let them know. There's a dance floor for Line (or other) Dancing, music and karaoke as well as DJ hosted functions. In the future look out for Quiz Nights and housie with Christmas and New Year functions. Lots of big changes

But it's the numerous small personal things that come together to make the Golden Fleece an asset to our community: good quality food and drinks, value for money, efficient service, a warm welcome, convivial atmosphere, easy parking, a relaxed informal setting and a team intent on making sure we return regularly.

Open Wednesday to Sunday 11.30am – 8pm

Closed Monday and Tuesday (Functions catered for on these days)

Happy Hours: Friday, Saturday, Sunday 5.00pm to 6.00pm.

P: 03 465 7395 E: goldenfleecehotel@outlook.co.nz

Websites: www.goldenfleecehotel.nz

www.southernsmokehouse.nz

www.soundsofthesouth.nz (Click the 'Listen Live' button)

FB: Golden Fleece Hotel & Southern Smokehouse Kitchen. Waikouaiti Otago, NZ (regular updates for the menu and opening hours)

Catherine Robinson

Tell us about your business. E powa.editor@gmail.com




W&S INDUSTRIES

Matua Kelly
2A Clackmannan Street, Waikouaiti
buildwithus@uandii.co.nz
+64 224 770 430

Build With Us | Commercial & Residential Scaffolding

POWA Community News

Many of you will know that for the past few months POWA Committee members Catherine Robinson and Stuart Brown have been voluntarily ensuring POWA Community News is produced and continues to improve. We are all extremely grateful to them. It is time now to once again put matters on a more formal footing, so we currently have a vacancy for an Editor to produce the POWA Community News and to provide editorial support for our website, social media and community directory.

Kath Ryan, POWA Chairperson E: kathryan09@gmail.com



SITUATION VACANT - EDITOR

We currently have a vacancy for an Editor to produce the POWA Community NEWS and to provide editorial support for our website and social media. This is a paid, part-time contract for 10 hours per week.

About your new role:

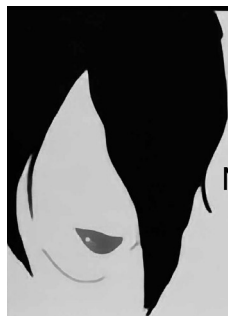
- Write or source and edit well-crafted, high-quality news and feature content for articles, newsletters, social media and website content.
- Produce 11 monthly newsletters per year, providing accurate and up-to-date information relevant to local residents.
- Produce an annual Community Directory.

About you:

- Demonstrated ability in writing and editing; excellent verbal communication skills.
- Professional behaviour and ability to manage tight deadlines.
- Ideally have experience with interviewing and working closely with your community.
- Live locally and have legal authorisation to work in New Zealand.

A job description can be obtained by emailing : community.powa@gmail.com or calling into the POWA Office in the East Otago Events Centre.

Applications, including a CV and Cover Letter, must be emailed to POWA (community.powa@gmail.com) by 5pm, 14th March 2025.



SkevAli Hair Studio

Inspire Create Refine

Not taking new clients at present

Alisha Skevington
Qualified Hairdresser

11 Mount Street
Waikouaiti
Otago
Ph: 022 0990755

Reports

East Otago Plunket Round Up

The East Otago Playgroup in Waikouaiti runs weekly during school term time on Wednesdays between 10.00 and 12.00 at the Plunket Rooms in the East Otago Events Centre, providing the opportunity to connect with other parents and caregivers and to give your child a chance to socialise, play and build connections with other children. A number of families regularly travel from a wide area to join this friendly and welcoming group.

The first Plunket organised First Aid course for this year is to be held in Waikouaiti on **Tuesday 6th March** from 10.00am – 11.30am. These courses are specifically tailored to parents of babies and toddlers and cover primary assessment, CPR, choking, RSV, meningitis, poisoning, burns and more. Spaces are limited so email me to register.

Look out for our annual autumn bulb fundraiser launching in March on <https://www.facebook.com/otagoplunket>

Plunket appointment or clinical enquiries: 0800 184 803

Annabel Kuzma

M: 027 2291 608

E: Annabel.kuzma@plunket.org.nz



You never know who you might meet at the Waikouaiti Crop Swap or what you might take home. Judy Martin considers the eggs, supplied by Fern and Briar's chooks.

Crop Swap: Saturday 22.March, 10am-11am
Gold Coin Donation

Presbyterian Hall, Kildare Street

E : wcropswap@gmail.com

FB : Waikouaiti Crop Swap

ONECOAST RESOURCE RECOVERY

Opening hours

Transfer Station Hub: 140 Edinburgh Street
 Wednesday, 12pm-3pm Saturday and Sunday, 1pm-3pm
Main Street Office:
 Wednesday, 9:30am-12:30pm Thursday, 9:30am-12:30pm

Fabric and Craft Sale

OneCoast continues to receive generous donations of all sorts of fabric and craft materials. We are showcasing these at a Saturday morning sale on 15 March. Along with the bolts and lengths of cloth, yarns and embroidery cottons there will be a complete set of dolls clothes, some Barbie dolls and accessories. We have some vintage tablecloths and napkins. Come and browse and stay for a cup of tea and a chat.

Saturday 15 March, 10am, East Otago Events Centre
 Judy Martin M: 021 130 7765
 E: chair@onecoast.org

**PALMERSTON
GARAGE SALE
EXTRAVAGANZA**

Sunday 23rd March
 10am-2pm

\$5 maps from Puketapu Radio Station or phone
 Holly on 0272059840

All proceeds from maps and raffles will go
 towards St. John Palmerston

11 different
 locations

**FIREWOOD
— KING —**

DANNY KING
 OWNER & OPERATOR

0221255236
 DANNY@FIREWOODKINGLIMITED.COM
 WWW.FIREWOODKINGLIMITED.COM
 CREDIT CARD - AFTERPAY - WINZ

Waikouaiti Coast Heritage Centre

Invitation : If you live in Waikouaiti or the surrounding area, when was the last time you visited the Heritage Centre? And, if you haven't visited yet, please consider a visit soon. Just look for the full-sized replica of the Cobb & Co Coach on the Main Street, outside the historic BNZ building. Just behind the old bank is our modern Heritage Centre which opened in 2021 and offers a fascinating glimpse of the area's rich history. There are opportunities to research families. The stock in the Gift Shop is regularly changed. There's local art, novelty items, irresistible chocolates, and our latest addition is a collection of beautiful teas; something to everyone's taste.

Open Day : Please put in your diary, Easter Saturday April 19th 10am-2pm which is the Heritage Centre's Open Day! We are offering free entry into the old BNZ Bank which is undergoing a massive restoration. Come, step back in time to the Victorian era. A worthwhile experience for history buffs of all ages. Look forward to seeing you!

Bev Medlin

E : bevmed@xtra.co.nz



Waikouaiti Coast Heritage Centre
 200 Main Road

Open Wednesday and Thursday 1pm - 4pm
 Friday, Saturday & Sunday 10am - 4pm.

*For heritage research & information,
 visitor information.*

Giftware and local artwork for sale.

E: admin@wchc.org.nz
 M: Ian 027 767 5411

Hawksbury Lagoon

This has been a most concerning and eventful month at the lagoon. On the afternoon of 27 January, Radio NZ and ODT reported large number of birds dying from avian botulism at the Waikouaiti sewerage ponds. That morning, I found a dead mallard on the Scotia Street causeway extension. On the advice of my MPI neighbour, I reported it through the MPI hotline. I was put in contact with Steve Dixon, the Fish and Game ranger who is monitoring waterways close to the sewerage ponds, including the Hawksbury Lagoon. He has been removing dead and euthanising dying birds. Initially numbers were small. On Steve's recommendation all properties accessing the lagoon were visited and asked to report all dead birds to MPI.

Avian botulism is a disease spread through birds acquiring the toxin from eating infected maggots and invertebrates; some bird-to-bird spread can also occur. Infected birds become gradually paralysed and usually die. Clostridium botulism is a natural soil microorganism but becomes a problem when water and water oxygen levels are low, temperatures warm and water quality poor. Feeding birds bread near water encourages clostridial growth. Avian botulism is very rarely transferred to humans (after all, who would want to eat a maggot) but cats and dogs can be affected.

On Thursday 13 February I noticed 8 dead or dying birds (mostly ducks but also swans and a red billed gull) at the



Bruce and James, Fish and Games Officers checking bird health and removing carcasses at the Lagoon.

estuary and reported this to Steve and to MPI . Two staff members were sent out (see photo) and found 26 dead or dying birds. This increase is of concern. To date deaths have been reported in paradise ducks, mallards, grey teal, black swans, Canada geese, pied stilts, black backed and red billed gulls.

An important issue is to reduce the risk of spread and future disease outbreaks. There are many measures that can be used such as aerating the water, preventing stagnation, removing dead and dying birds, providing barriers to prevent bird access and using bird deterrents such as loud noises. What we all can do is avoid feeding ducks and let them forage naturally. If they really do need feeding, then give them seeds and grains on land well away from water and cleaned up leftover food. Bird deaths should be reported to MPI following their criteria, and during this outbreak all bird deaths should be reported so the bodies can be safely removed. We can all help our feathered treasures to get through this threat.

See: <https://www.aucklandcouncil.govt.nz/environment/looking-after-aucklands-water/stormwater/docsother/avian-botulism-brochure.pdf>

Ruth Ferguson

E: risabelfe@gmail.com



Waikouaiti Indoor Bowls Club

Fancy some gentle exercise, not weather dependent, great facilities and cheery, friendly company? Well, turn up at the Waikouaiti Indoor Bowls Club on Wednesday 2nd April at the East Otago Events Centre. It runs from 7.00pm to 9.00pm and the games are played indoors on long mats. The bowls are provided so you never need to buy them. Enter by the side entrance from the car park.

Your first night is FREE! so come along and give it a go. We have all levels of ability and experience including total beginners. If your interest is purely social, that's fine. If you're competitive, we have a competitive programme too. Being affiliated to the North Otago Indoor Bowls Association, those who wish can play against other clubs in Oamaru and elsewhere so plenty of opportunity to indulge in this sport to the level that suits you!

Eva Hammond

M: 027 756 3497

P: 03 465 7790

**CRAIG MCCAW
ELECTRICAL**

📞 027 432 8485

✉️ mccaw@slingshot.co.nz

All types of electrical work, renovations and new builds.

**Registered
Electrical Inspector
Servicing the East
Otago Area for
over 40 years**

E

Vicki Offen

021 212 7842

vicki@edinburgh.co.nz

Edinburgh

Edinburgh Realty Ltd. Licensed under the REAA 2008





POWA IN THE PAST:

From the POWA Community News archive

February / March 2000 : 25 Years ago

The [New Year's Eve] Community Bonfire Party went off with a bang. Well done you guys for organising such a fun night . . .

I got a thank you letter today from a local who really enjoyed our Bonfire New Year's night, especially the fireworks ... "It was as good as going to Dunedin".

We're a wee community but when we put our minds to it and work hard we can do heaps of great stuff.

Did you attend? Tell us about it. And, would it be a good idea to organise something for New Year's Eve this year. Anyone out there prepared to start the ball rolling?

In the February issue, we remembered the raft Races on the Waikouaiti River at Karitane. A reader is interested in starting these again and wants to put a team together to organise this. Great idea - are you willing to be involved? If so, contact us and we will pass on your details.

E : powa.editor@gmail.com

Happy Days
88.3 FM
happydaysfm.com

Palmerston
and
Waikouaiti

Find us on
Google!

Puketapu
Radio756am

RGJ MOWER SERVICES
92 Thomas Street, Waikouaiti
Russell Jenkinson
Phone 021 167 9646

Repairs and Servicing to Lawn Mowers including
Ride-ons and also Chainsaws.

Chainsaw sharpening, new chains, parts
and accessories

Fast, friendly service

Free pickup and delivery (Waikouaiti area only)



February 1985 was when Waikouaiti residents were able to telephone Dunedin toll free. Here Waikouaiti postmistress Nicky Oliver poses for a photo.
Photo ODT

POWA Business Directory

We are currently developing an up-to-date POWA Business Directory and offer FREE listings to all local businesses and organisations. Don't miss out!

For a free listing, contact us with the following information:

- 1 Name of the business
- 2 Type of business
- 3 Name of contact person/owner
- 4 Email address
- 5 Contact phone number

Contact us: powa.directory@gmail.com

continuous

GARAGE SALE

from 1st to 15th March
at 125A Thomas Street, Waikouaiti

**Nick knacks plus a huge collection
of brand new tupperware**

Phone 021 1097 122 to view

List and Sell with Leanne and Reap the Rewards!



- **FREE** Marketing Package (worth upto \$2000)
- Fair Flat Fee - Only paid once SOLD
- **FREE** Trade Me Platinum Upgrade to maximise results
- **FREE** Facebook/Google Boost
- **\$1000** Grocery Voucher **gifted** once SOLD
- **FREE** SOLD sign



Scan for your
FREE Appraisal



Leanne Black
Sales Consultant
027 552 5502
leanne.black@tallpoppy.co.nz



TRY SOMETHING NEW . . . Fitness and fun . . . Meet new people . . . Volunteer . . .

TRY SOMETHING NEW

Book Passion (Book Club)

Tuesday, alternate months
6.30pm-8.30pm
Waikouaiti Library
Library 03 474 3690
Eryn.makinson@dcc.govt.nz

East Otago Creative Fibre

(Spinners and Weavers)
1st Thursday of the month: 10am-2pm
St John's Hall, Beach Street
Lorraine McLean 027 288 6081
Laurel Caddick 021 269 0288

East Otago Art Group

St John's Hall, Beach Street
Reywa Brown 022 254 7620

Eastern Boating Fishing Club

Kerrie Boock 027 358 8769
Eric Broock 027 686 9939
easternbfclub@gmail.com

East Otago Artisans

Reywa Brown 022 254 7620

East Otago Musical Theatre

Sharleen Snoeck 021 0825-5735
Eomtproductions@gmail.com

East Otago Social Bridge Club

Wednesday 6.50pm
RSA Hall, Pratt Street
Susan Daly 022 0214 722
EOBridge@outlook.com

East Otago Wood Turners

Thursdays 1pm-3pm, 6pm-8pm
Lou Tonkin 020 4037 9635

East Otago Camera Club

2nd Monday of the month
7.30pm – 9.30pm
St Mary's Church Hall, Stromness St,
Palmerston
Tracey Clare 027 245 6424
eastotagocameraclub@gmail.com

East Otago Poets

Tuesday alternate months 9.30am-
11.30am
Waikouaiti Library 03 474 3690
Eryn.makinson@dcc.govt.nz

Kati Huirapa Runaka ki Puketeraki

Monday 9am-4pm
03 465 7300

Palmerston Fibre Arts Collective

Sunday 11am-2pm
Palmerston Community Hall, Ronaldsay
St, Palmerston
Christine Leov-Lealand 021 061 4485

Waitaki Writers Group

2nd Monday of the month 1.30-3.30
St John's Hall, Exe St, Oamaru
Bruce Costello 027 451 4149
waitakiwriters@yahoo.co.nz

Waikouaiti Garden Club

Last Monday of the month 7pm
John Brown Room, Events Centre
Barb 021 180 7366
Alison 021 652811

Waikouaiti Golf Club

Tues 10am, Fri 12.45pm, Sat 12.noon
M: 021 663 641
waikouaitigolf@gmail.com

Waikouaiti Creative Crafts

2nd and 4th Wednesday 9.30am-2pm
Hawksbury Village Coffee Lounge,
beside the Church
Cathy 027 201 1463
Christine 021 235 1883

Waikouaiti Rodeo Club

Logan Rowland 021 025 76513
waikouaitirodeo@gmail.com

FITNESS AND FUN

Eastern Rugby Club

Abby Lynch 027885 5105
easternrugbyclub@gmail.com

East Otago High School Park Run

Saturday 8am
Chris Wells M : 027 4811755
E : eastotagohighschool@parkrun.com

Hydrotherapy & Aquacise

Thursday 9.30am-10.30am
Moana Gow Pool, Hawksbury
Bev 021 055 8501

Karitane Bowling Club

Oct-March Thursday 4pm
Bob 021 055 8501

Karitane Indoor Bowling Club

April-Sept Tuesday 1pm
Karitane Hall
Neil 027 220 3033

Karitane Hall Yoga

Saturdays 9am - 10am
Nicola IYTA NZ & IYA 021 0862 0140

Kyokushin Karate

Mon & Thurs 6pm-8pm
Presbyterian Hall, Kildare Street
Noah Heath 027 283 5043
Noah.heath@slingshot.co.nz

Line Dancing

Monday 4pm; Beginners 3.30pm
Presbyterian Hall, Kildare Street
Heather Cox 027 228 1355
heather.cox@xtra.co.nz

Moana Gow Pool

Hawksbury Village
Jane 027 474 5263
moanagowpooltrust@gmail.com

Pétanque

Wednesday & Sunday 1.15pm
Heather Cox 027 228 1355
heather.cox@xtra.co.nz

Steady as You Go

Wednesday 10am
East Otago Events Centre

Tai Chi

Mon 10am, Intermediate; 2pm Beginners
Tuesday 7pm, Friday 10am
St John's Church Hall, Beach St
Judy Martin ratasouthern@gmail.com

Twilight Tennis

Thursday 6.30pm
Sarah McMillan 021 207 2486

Waikouaiti Indoor Bowling Club

Wednesday 7pm-9pm
EO Events Centre
Phil Hammond 03 465 8157
Eva Hammond 03 465 7790

Waikouaiti Outdoor Bowling Club

Thursday 2pm
Karen Kelly 027 244 3646
Colleen 03 465 7558

Yoga

Sunday 6.30pm-7.30pm
East Otago Events Centre
Elena hello@kmfitnessandnutritionnz.com

MEET NEW PEOPLE

Lions Club, Palmerston

2nd Monday of the month, 6pm
Waihemo Lodge
Bruce 027 212 7075
Ronald 027 431 1535

East Otago Blokes Shed

Hawksbury Village
Neil Kennedy kennedy.rjneil@gmail.com

Returned Services Association (RSA)

Friday 4.30pm
RSA Hall, Pratt Street
Wendy Macleod 021 167 6334

Waikouaiti/Karitane Living Alone Group

3rd Wednesday of the month, 12. noon
The Outpost Café
Lois 03 465 7492

FOR FAMILIES

Waikouaiti-Palmerston Toy Library

Saturday 12 noon – 1.30pm
Clackmannan St, Waikouaiti Racecourse
E: wptoylibrary@yahoo.co.nz

East Otago Buddy Programme

For children 5-12 years
Jo Scott 021 268 478p

Palmerston Playgroup

Thursday during school term 10.15 – 11.45
Waikouaiti Plunket Rooms, EOEC
Annabel Kuzma 027 229 1608

Waikouaiti Coast Heritage Centre

Wednesday and Thursday 1pm - 4pm
Friday, Saturday & Sunday 10am - 4pm.
E: admin@wchc.org.nz,
Ian 027 7675411

VOLUNTEERS WANTED

Volunteer South

www.volunteersouth.org.nz
E: info@volunteersouth.org.nz

Waikouaiti Community Garden

Robin 027 440 4844

Waikouaiti Volunteer Fire Brigade

David McLeod
david.mcleod@fireandemergency.nz

Hawksbury Lagoon Projects

Ruth Ferguson 021 1130 719

Hikaroroa/Mt Watkin Conservation Group

Jamie Hickling, Volunteer Coordinator
M: 020 409 39311 E: jamie@mcu.kiwi.nz

Riding for the Disabled

waikouaitirda@gmail.com.

OneCoast Hub

Judy Martin 021 130 776
chair@onecoast.org

Amend your free listing or add a
new one: powa.editor@gmail.com

NIDD
REALTY

Sharon
AT NIDD REALTY

Waikouaiti Statistics - January 2024 - January 2025

Median Sale Price
\$498,000

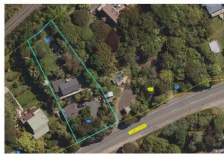
Avg Days on Market
64

No. of Sales
46

FOR SALE



121 Coast Road, Warrington



BED 2 | BATH 1

FOR SALE



9 Palmer Street, Seacliff



7 View Street, Warrington



Sharon Larkins
Property Consultant
Licensed under the REAA 2008

027 280 7456
sharon.larkins@nidd.co.nz

Rachel Brooking MP for Dunedin

03 474 1973 | 544 Great King Street, Dunedin
Rachel.BrookingMP@parliament.govt.nz
f/RachelBrookingMP

Labour

Authorised by Rachel Brooking MP,
Parliament Buildings, Wellington




AM
fitnessandnutrition

203 MAIN ROAD, WAIKOUAITI
Katrina McAra 0272526986
hello@kmfitnessandnutritionnz.com
www.kmfitnessandnutritionnz.com

GROUP FITNESS, PT SESSIONS, YOGA, 24/7 GYM

PARK BROS

WOF INSPECTIONS
SERVICE & REPAIRS
TYRES

ESTABLISHED 1947
OPEN MON-FRI
8AM - 5PM



PUNCTURE REPAIRS
BATTERIES
HYDRAULIC HOSES

PH 03 465 1447

79 GOODWOOD RD, PALMERSTON

Alan Cooper

Property Consultant

E. alan@cutlers.co.nz
M. 027 315 5895
P. 03 467 7277

709 Great King Street, Dunedin

www.cutlers.co.nz



Make up a team (up to 6) for the QUIZ NIGHT - Thursday 20th March



1 Gill Street, Waikouaiti 9510
8am to 4.30pm, Monday to Friday
03 465 7610

Run 1	6.45am	Starts run in Dunedin
	9.30am	Departs Dunedin to Waikouaiti, Palmerston, Macraes, Ranfurly, Naseby, Middlemarch, Outram and Mosgiel, returning to Dunedin <i>Bookings required by 9am</i>
Run 2	12noon	Departs Waikouaiti for Dunedin
	2.15pm	Departs Dunedin for Waitati, Warrington, Karitane, Waikouaiti and Palmerston <i>Bookings required by 2pm</i>
Freight Run		Daily Service between Dunedin, Waikouaiti and Palmerston <i>Bookings by arrangement</i>



Lottery Grants Board
Te Puna Tahua
LOTTO FUNDS FOR YOUR COMMUNITY



DUNEDIN | kaunihera
CITY COUNCIL | a-rohe o
ōtepoti

